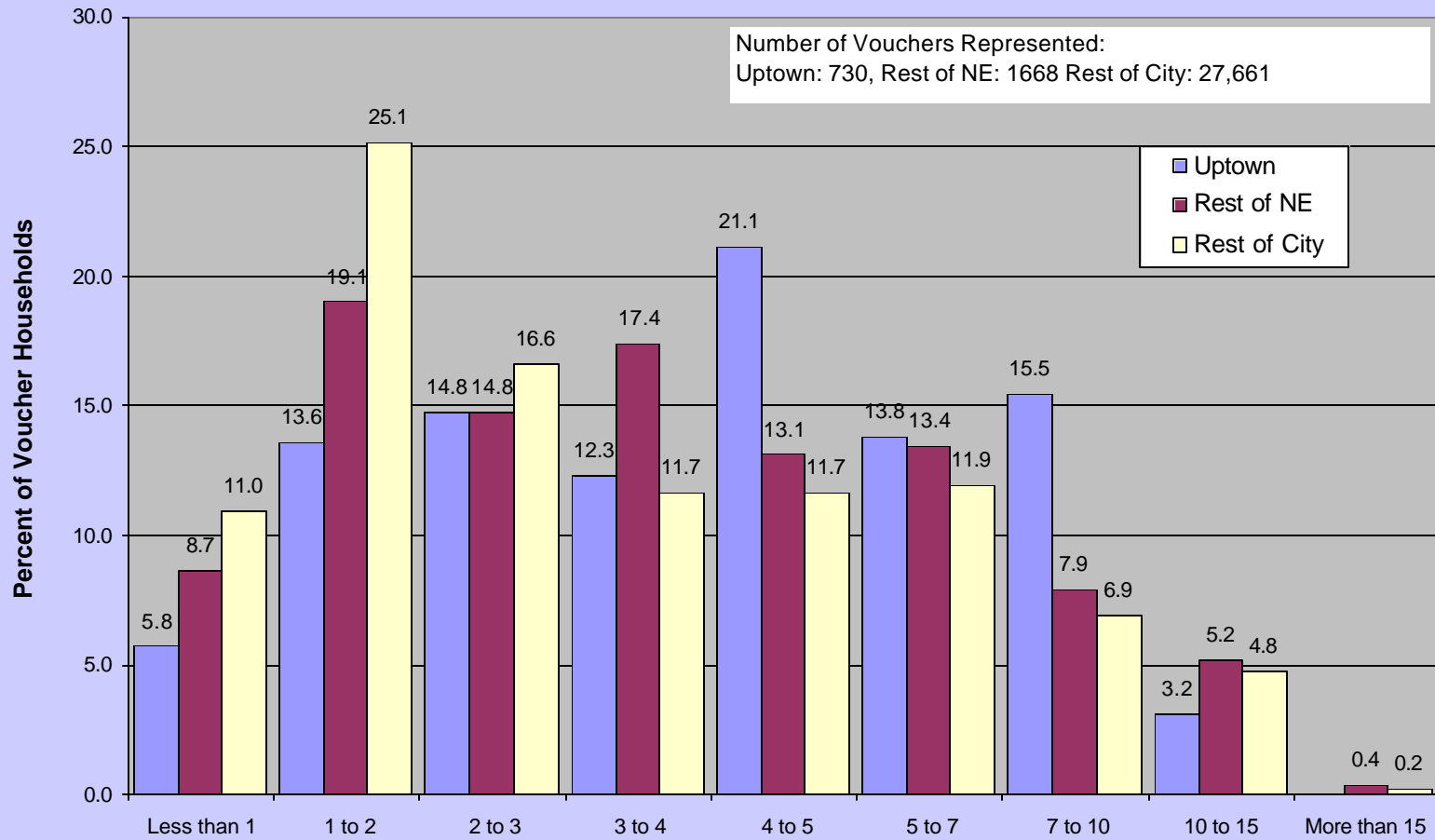


Years Voucher Holder Has Lived in Current Unit, 12/31/01



Source: CHAC, Inc. Rest of NE refers to the six Community Areas near Uptown: Rogers Park, Edgewater, North Center, Lake View, West Ridge, and Lincoln Square; Rest of City refers to the city totals less Uptown

Housing Choice Vouchers, Length in Time of Current Unit by Age of Head of Household, Uptown and Chicago, 2001 (CHAC, Inc.)

Uptown			
Age of Head of HH	Avg Time in Current Unit	# of Households	Percent of Voucher Holders
Less than 20	2.47	3	0%
21 to 30	2.99	38	5%
31 to 40	3.35	99	14%
41 to 50	3.94	213	29%
51 to 60	4.51	155	21%
61 to 70	4.13	105	14%
71 to 80	3.94	76	10%
81 to 90	4.53	38	5%
Over 90	6.55	2	0%
City			
Age of Head of HH	Avg Time in Current Unit	# of Households	Percent of Voucher Holders
Less than 20	1.71	147	0%
21 to 30	1.74	5372	18%
31 to 40	2.41	6914	23%
41 to 50	3.49	8069	27%
51 to 60	4.06	4425	15%
61 to 70	4.15	2489	8%
71 to 80	4.81	1586	5%
81 to 90	6.14	483	2%
Over 90	8.19	63	0%
Difference (Uptown - City)			
Age of HofH	Avg Time in Current Unit		
Less than 20	0.75		
21 to 30	1.25		
31 to 40	0.94		
41 to 50	0.45		
51 to 60	0.45		
61 to 70	-0.02		
71 to 80	-0.87		
81 to 90	-1.61		
Over 90	-1.64		

2002 Federal Poverty Guidelines

Size of Family Unit	48 Contiguous States and D.C.	Alaska	Hawaii
1	\$8,860	\$11,080	\$10,200
2	\$11,940	\$14,930	\$13,740
3	\$15,020	\$18,780	\$17,280
4	\$18,100	\$22,630	\$20,820
5	\$21,180	\$26,480	\$24,360
6	\$24,260	\$30,330	\$27,900
7	\$27,340	\$34,180	\$31,440
8	\$30,420	\$38,030	\$34,980
For each additional person, add	\$3,080	\$3,850	\$3,540

SOURCE: <http://aspe.os.dhhs.gov/poverty/poverty.shtml>

As noted in the poverty guidelines Federal Register notice, there is no universal administrative definition of "income" that is valid for all programs that use the poverty guidelines. The office or organization that administers a particular program or activity is responsible for making decisions about the definition of "income" used by that program (to the extent that the definition is not already contained in legislation or regulations). To find out the specific definition of "income" used by a particular program or activity, one must consult the office or organization that administers that program.